



Dimensional Measurement Solutions

# COMBINED PORTFOLIO

Making Measurements

**Error** Free & **Operator** Free

# 1 Profile Projectors

---

## **Vertical Profile Projector**

- 03 Co-Axial Profile Projectors
- 04 Vertical Profile Projectors (SP Series)
- 05 Vertical Profile Projectors(SV Series)

## **Horizontal Profile Projector**

- 06 Horizontal Profile Projector (300,400)
- 07 Horizontal Profile Projector (600,800,1000)
- 08 Side Bedded
- 09 Shadowgraph Profile Projector
- 10 Video Profile Projector
- 11 Camera Based Profile Projector

# 2 Video Measuring Machines

---

- 13 Vision Measuring System
- 14 FOV VMM
- 15 Multi Sensor CNC – VMM
- 16 OCMM
- 17 CMM

# 3 One Click Systems

---

## **Part Genie with SV**

- 19 Vertical Part Genie
- 20 Horizontal Part Genie
- 21 Dual Part Genie
- 22 Cable Genie
- 23 Rubber Genie
- 24 Spring Genie
- 25 CNC Part Genie – Sony Robo

## **Part Genie with SIPMEAS 2.0**

- 26 Vertical Part Genie (Fixed Table)
- 27 Vertical Part Genie (Moving Table)
- 28 Vertical Part Genie (Large Table)
- 29 Horizontal Part Genie with Rotary

# 4 Tool Inspection

---

- 30 Tool Inspector
- 31 Accessories

## 5 Microscopes

---

- 33 Tool Maker Microscope
- 34 Special Purpose Microscope
- 35 Depth Measuring Microscope
- 36 Digital Microscope
- 37 Stereo Microscope
- 38 Carbon Black Dispersion and Void Contamination Microscope

## 6 Magnifiers

---

- 39 10X Loupe
- 40 Table Top Magnifiers
- 41 New Table top Magnifier

## 7 Dittomix

---

- 42 Dittomix
- 43 Dittomix Applications

## 8 Cable Slicer

---

- 44 Cable Slicing Machine
- 45 Cable Slicing & Striping Machine

## 9 DROs

---

- 46 Digital Readout
- 47 MLX DRO

## 10 Softwares

---

- 48 SIPMEAS 2D
- 49 M2
- 50 SIPMEAS 3D
- 51 M3
- 52 SIPMEAS 2.0

## 11 Training

---

- 53 CSTP
- 54 SAME

## 12 Kit

---

- 55 Calibration Kit

# Making Quality to Measure Quality

Established in 1971 SIPCON offers a comprehensive and superior lineup of quality Profile Projectors, Vision Measuring Systems, Industrial Vision Inspection Solutions and Coordinate Measuring Machines – the largest range in the world.

With a network of fully trained support team SIPCON provides full after sale service and support second to none. The name SIPCON stands synonymous with the ultimate precision quality and reliability



**7 Patents Approved**





# 7500 USERS *DELIGHTED*

All Across the globe



HERO KOHLER.



SHRIRAM PISTONS



TVS RUBBER

KEI Wires & Cables



POLYCAB Wires & Cables

RR KABEL

SANDHAR  
Growth. Motivation. Better Life

ROCKMAN

UNO MINDA

motherson

Austech INDUSTRIES



Johnson & Johnson

PHILIPS



LAPPINDIA



Roop Polymers



HYUNDAI

فيلدكهرباء ومياه  
Field Electricity & Water Technology



Panasonic



# Co-Axial Profile Projector

## Where precision meets affordability

SPN Series



SPN 300

---

### SCREEN

**Size:** 300 mm diameter  
**Construction:** Vertical bench top  
Opaque glass screen with cross  
line (0-360°) L.C. 1 min  
**Location:** Above the workstage  
**Image Type:** Erect & unreversed

### WORKSTAGE SIZE

**Std:** 410 mm x 310 mm  
**Opt:** X-axis upto 550 mm,  
Y axis upto 350 mm

### MEASURING RANGE

**Std:** 250 mm x 150 mm  
**Opt:** Upto X axis - 400 mm,  
Y axis - 200 mm

### LIGHT AXIS

Vertical & surface light - Coaxial  
(through the lens)

### FOCUSING

**Travel:** 100 mm  
**Method:** By raising & lowering the  
optical head  
**Movement:** Manual

### LINEAR MEASUREMENT

Built in glass scale/Linear encoder

### OPTICS

**Std:** 10X, 20X - Parafoval  
**Opt:** 50X, 100X  
**Mount:** 3 lens turret mount

### ACCURACY

**Mag.:**  $\pm 0.05\%$  (Contour/Surface)  
**Measuring:** X,Y ( $\pm 3 + L/100$ )  $\mu\text{m}$

### WORKPIECE HEIGHT

100 mm

### MEASURING SYSTEM

D.R.O./Software

### ILLUMINATION

**Contour:** 24V/150W halogen lamp with  
control & fan cooling  
**Surface:** Twin 24V 150W halogen lamp  
on axis vertical to provide coaxial  
light system with fan cooled system

### RESOLUTION

**Linear:** 0.001/0.0005 mm  
**Angular:** 1 sec

### REPEATABILITY

$\pm 0.003\text{mm}$

### MOTORIZED MOVEMENT

**opt:** (X, Y, focusing with speed control)

### POWER SUPPLY

AC - 110/220V (50/60 Hz) single phase

# Vertical Profile Projector

## Bench Top Series

### SP Series



SP-300



SP-400

#### SCREEN

**Size:** 300/400 mm

**Construction:** Opaque glass screen with 90° cross line fitted with graduated rotary ring (0-360°) operated by knob, L.C. 1 min.

#### WORKSTAGE SIZE

**Std:** 250 mm x 250 mm

**Opt:** X-axis upto 550 mm, Y axis upto 350 mm

#### MEASURING RANGE

**Std:** 100 mm x 100 mm

**Opt:** Upto X axis - 400 mm, Y axis - 200 mm

#### LIGHT AXIS

Vertical

#### FOCUSING

90 mm/100 mm

#### LINEAR MEASUREMENT

Micrometers/Built in glass scale

#### OPTICS

**Std:** 10X

**Opt:** 20X, 50X, 100X

**Mount:** 3 lens turret mount/Screw mount

#### ACCURACY

**Magnification:**  $\pm 0.05\%$  (Contour/Surface)

**Measure:**  $3 + L/100 \mu\text{m}$

#### MEASURING SYSTEM

Micrometer/D.R.O./PC based software

#### COOLING SYSTEM

Fan

#### ILLUMINATION

**Contour:** 24V/150W halogen lamp, illumination control with condenser unit provide light as per lens

**Surface:** Twin 24V 150W halogen lamp

#### RESOLUTION

**Linear:** 0.001/0.0005 mm

**Angular:** 1 sec

#### MOTORIZED MOVEMENT

**Opt:** (X, Y, focusing with speed control)

#### OPTIONAL HARDWARE

Profile Charts, Rotary Table, V-block, Centre Holding Device Opto Edge Sensor, Rotary Encoder

#### POWER SUPPLY

AC - 110/220V (50/60 Hz) single phase

#### STAND

Unique rigid pedestal system facilitates vibration free handling of component

# Vertical Profile Projector

## Floor Model

### SV Series



SV-400



SV-600



SV-800

#### SCREEN

**Size:** 400/600/800 mm

**Construction:** Opaque glass screen with 90° cross line fitted with graduated rotary ring (0-360°) operated by knob, L.C. 1 min.

#### WORKSTAGE SIZE

**Std:** 250 mm x 250 mm

**Opt:** Upto X-axis - 400mm, Y axis upto 350 mm

#### MEASURING RANGE

**Std:** 100mm x 100mm

**Opt:** Upto X axis - 400mm, Y axis - 200mm

#### LIGHT AXIS

Vertical

#### FOCUSING

90mm/100mm

#### LINEAR MEASUREMENT

Micrometers/Built in Glass Scale

#### OPTICS

**Std:** 10X

**Opt:** 20X, 50X, 100X

**Mount:** 3 lens turret mount/Screw mount

#### ACCURACY

**Magnification:**  $\pm 0.05\%$  (Contour/Surface)

**Measure:**  $3 + L/100 \mu\text{m}$

#### MEASURING SYSTEM

D.R.O./PC based software

#### COOLING SYSTEM

Fan

#### ILLUMINATION

**Contour:** 24V/150W halogen lamp, illumination control with condenser unit provide light as per lens

**Surface:** Twin 24V 150W halogen lamp

#### RESOLUTION

**Linear:** 0.001/0.0005 mm

**Angular:** 1 sec

#### MOTORIZED MOVEMENT

Opt.(X, Y, focusing with speed control)

#### OPTIONAL HARDWARE

Profile Charts, Rotary Table, V-block, Centre Holding Device Opto Edge Sensor, Rotary Encoder

#### POWER SUPPLY

AC - 110/220V (50/60 Hz) single phase

#### STAND

Unique rigid pedestal system facilitates vibration free handling of component

# Horizontal Profile Projector

## Accurate & Sturdy

Benchtop – SH Series



SH-300



SH-400

---

### SCREEN

**Size:** 300/400 diameter  
Opaque glass screen with 90° cross line, L.C. 1min.

### WORKSTAGE SIZE

**Std:** (400 x 150) / (450 x 200) mm

### MEASURING RANGE

**Std:** (150 x 100) / (200 x 100) mm  
(200 x 150) mm  
**Opt:** X-axis upto 350 mm,  
Y-axis upto 250 mm

### LIGHT AXIS

Horizontal

### FOCUSING

75 mm / 100 mm

### LINEAR MEASUREMENT

Built in Glass Scale/Linear Encoder

### OPTICS

**Std:** 10X  
**Opt:** 20X, 50X, 100X  
**Mount:** Turret with Click Stop

### PROJECTION ACCURACY

±0.05% (Contour/Surface)

### HELIX RANGE

±12° / ±15°

### MEASURING SYSTEM

D.R.O. / PC based software

### COOLING SYSTEM

Fan

### ILLUMINATION

**Contour:** 24V/150W halogen lamp,  
illumination control with condenser  
unit provide light as per lens  
**Surface:** Twin 24V 150W halogen lamp

### MOTORIZED MOVEMENT

Optional (X, Y, focusing with speed  
control)

### OPTIONAL HARDWARE

Profile charts, Rotary table, V-block,  
Centre holding device opto edge  
sensor, Rotary encoder

### POWER SUPPLY

AC - 110/220V (50/60 Hz) single phase

# Horizontal Profile Projector

Measure even the largest parts with precision

Floor Model – SH Series



SH-600



SH-800



SH-1000

## SCREEN

**Size:** 600/800/1000 mm diameter  
Opaque glass screen with 90° cross line, L.C. 1 min.

## WORKSTAGE SIZE

**Std:** 450 x 200 mm  
**Opt:** Upto 600 mm

## MEASURING RANGE

**Std:** (200 x 150) mm  
**Opt:** X-axis upto 400 mm,  
Y-axis – 250 mm

## LIGHT AXIS

Horizontal

## FOCUSING

**Travel:** 100 mm  
**Movement:** Manual/Motorized

## LINEAR MEASUREMENT

Built in Glass Scale with D.R.O

## OPTICS

**Std:** 10X  
**Opt:** 20X, 25X, 50X, 100X  
**Mount:** Turret with Click Stop/  
Screw Mount/ Slide Mount

## PROJECTION ACCURACY

±0.05% (Contour/Surface)

## HELIX RANGE

±12° / ±15°

## MEASURING SYSTEM

D.R.O. / PC based software

## COOLING SYSTEM

Fan

## ILLUMINATION

**Contour:** 24V/150W halogen lamp,  
illumination control with condenser  
unit provide light as per lens  
**Surface:** Twin 24V 150W halogen lamp

## MOTORIZED MOVEMENT

Optional (X, Y and focusing)

## OPTIONAL HARDWARE

Profile charts, Rotary table, V-block,  
Centre holding device opto edge  
sensor, Rotary encoder

## POWER SUPPLY

AC – 110/220V (50/60 Hz) single phase

## STAND

Unique rigid pedestal system for  
vibration free handling

# Side Bedded Horizontal Profile Projector

The biggest possible

SH Series



SH-1000

---

## SCREEN

**Size:** 1000/1200 mm diameter  
**Construction :** Side bedded horizontal opaque glass screen with cross line  
**Location:** Sideways fitted with graduated ring (0-360°) L.C. 1 min, through digital counter

## WORKSTAGE SIZE

**Size:** 800 mm x 200 mm  
**Travel:** X-axis 400 mm, Y-axis 250 mm, Z-axis 120 mm (Motorized)  
**Helix:** Rotation  $\pm 15^\circ$  L.C. 10 min  
**Load Capacity:** 200 kgs  
Max. dia. hold capacity: 300 mm  
Max. length hold capacity: 450 mm

## LINEAR MEASUREMENT

Built in glass scale/Linear encoder

## OPTICS

**Std:** 10X, 20X, 50X, 100X  
**Mount:** Turret mount

## ACCURACY

**Mag.:**  $\pm 0.1\%$  (Contour/Surface)  
**Measuring:**  $E1=2+L/80\mu\text{m}$ ,  
 $E2=3+L/33\mu\text{m}$

## MEASURING SYSTEM

D.R.O./Software

## ILLUMINATION

**Contour:** 24V/150W halogen lamp with illumination with fan cooled system  
**Surface:** Twin 24V 150W halogen lamp

## RESOLUTION

**Linear:** 0.001/0.0005 mm,  
**Angular:** 1 sec

## REPEATABILITY

$\pm 0.003$  mm

## EDGE SENSOR

Internal/External

## DIMENSIONS

3700 mm X 2500 mm X 2300 mm

## WEIGHT

4500 Kgs

## POWER SUPPLY

AC - 110/220V (50/60 Hz) single phase



# Shadograph Profile Projector

Tailored to your needs

SVS Series



SVS-300



SVS-600



SVS-800

---

## SCREEN

**Size:** 300/400/600/800 mm dia.  
Opaque glass screen with 90° cross line Fitted with L.C. 1min.

## WORKSTAGE SIZE

**Std:** 160 X 160 mm  
200 X 200 mm, 260 X 260 mm

## MEASURING RANGE

**Std:** 50 X 50 mm, 100 X 100 mm  
**Opt:** X-Axis upto 400 mm,  
Y-Axis upto 200 mm

## AXIS LIGHT

Vertical

## FOCUSING

100 mm

## LINEAR MEASUREMENT

0-25µm with LC 0.001 mm  
0-25µm Micrometers/ Built-in glass scale

## OPTICS

**Std:** 10X  
**Opt:** 20X, 25X, 50X, 100X  
**Mount:** Screw Mount

## PROJECTION ACCURACY

±0.05% (Contour/Surface)

## MEASURING SYSTEM

Micrometers / D.R.O. / PC based software

## COOLING SYSTEM

Fan

## ILLUMINATION

**Contour:** 24V/150W halogen lamp, illumination control with condenser unit provide light as per lens  
**Surface:** Twin 24V 150W halogen lamp

## MOTORIZED MOVEMENT

Optional (X, Y and focusing)

## OPTIONAL HARDWARE

Profile charts, Rotary table, V-block, Centre holding device opto edge sensor, Rotary encoder

## POWER SUPPLY

AC ~ 110/220V (50/60 Hz) single phase

## STAND

Unique rigid pedestal system facilitates vibration free handling of component



# Video Profile Projector

Measure big parts with highest precision

VCBPP Series



---

## PART VIEW ORIENTATION

Vertical

## DISPLAY

24" Touch screen

## MAX LOAD CAPACITY

20kgs

## WORKSTAGE SIZE

350x250 / 450x300 / 350x250 mm

## FIELD OF VIEW

34x28 mm / 60x50 mm

## WORKSTAGE MATERIAL

Special aluminium alloy

## X-Y-Z TRAVEL (mm)

200x100 / 300x200

## DIGITAL VIDEO CAMERA

5MP

## SURFACE ILLUMINATION

LED

## X-Y ACCURACY

El = 3.0µm + L/100

## FOCUSSING

150 mm / 200 mm

## TRANSMITTED ILLUMINATION

LED

## REPEATABILITY

3µm

## MOVEMENT ( X,Y,Z)

Manual, Joystick or CNC

## SOFTWARE OPTIONS

DXF overlay

Profiling

Thread measurement module

## SCALE RESOLUTION

1µm

## SOFTWARE

M3

# Camera Based Profile Projector

## Simple & Reliable

### SVI-CH Series



SVI-CH-DR



SVI-CH-SW

---

#### MEASURING SYSTEM

GEO D.R.O. / SIPMEAS / M2 Software

#### MEASURING RANGE

**Std:** 100 X 100 mm

**Opt.:** X-Axis upto 500 mm,

Y-Axis upto 400 mm

#### FOCUSSING RANGE

100 mm (without encoder)

#### RESOLUTION

0.001/ 0.0005 mm

#### LINEAR ACCURACY

(3+L/200) micron

#### REPEATABILITY

±(0.002 mm)

#### VISION

1/3" High Resolution CCD Camera

#### MAGNIFICATION

Optical Magnification 0.7X - 4.5X

#### MEASUREMENT METHOD

With Cross-Hair on Screen

#### BASE PLATFORM

Metal

#### OPERATION

Manual with Quick Release Knob

#### LOAD CAPACITY

10 KGs

#### ILLUMINATION

**Surface :** LED

**Contour :** LED

#### JOYSTICK

Optional

#### POWER SUPPLY

220-240 V ±5%, 50/60 HZ

#### OPTIONALS

Optional (Binocular / Trinocular)



Video  
Measuring Machines

---

Co-Ordinate  
Measuring Machines

# Vision Measuring System

Amazing combination of measuring range  
& precision

## SVI-IMG Series



SVI-IMG-3D (Metal Base)



SVI-IMG-M3 (Granite Base with Table)

---

### SOFTWARE

SIPMEAS / M3

### MEASURING RANGE

**Standard:** 150 X 100 X 100 mm  
**Optional:** X-Axis upto 500 mm,  
Y-Axis upto 400 mm,  
Z-Axis upto 300 mm

### RESOLUTION

0.001 / 0.0005 / 0.0001 mm

### LINEAR ACCURACY

(3+L/200) micron

### REPEATABILITY

± (0.002 mm)

### VISION

1/3" High resolution CMOS camera

### MAGNIFICATION

**Optical:** 0.7X - 4.5X  
**On Monitor:** 35X - 225X

### VIDEO EDGE DETECTION

Standard

### ILLUMINATION

**Surface:** LED  
**Contour:** LED

### OPERATION

Manual with quick release knob

### BASE PLATFORM

Metal base / Granite base

### PLATFORM LOAD CAPACITY

15 Kgs

### POWER SUPPLY

AC - 110/220V (50/60 Hz) single phase

### OPTIONALS

- Motion control through joystick
- Programmable light control
- Touch probe
- Non-linear error correction
- Autofocus

# FOV Video Measuring Machine

## Combination of One Click & VMM

### SVI-FOV Series



SV-FOV M3

---

#### SOFTWARE

M3

#### MEASURING RANGE

**Standard:** 150 X 100 X 100 mm  
**Optional:** X-Axis upto 500 mm,  
Y-Axis upto 400 mm,  
Z-Axis upto 300 mm

#### RESOLUTION

0.001 / 0.0005 / 0.0001 mm

#### LINEAR ACCURACY

(3+L/200) micron

#### REPEATABILITY

±(0.002 mm)

#### VISION

1/3" High resolution CMOS camera

#### FOV

16 mm, 32 mm, 48 mm

#### VIDEO EDGE DETECTION

Standard

#### ILLUMINATION

**Surface:** LED  
**Contour:** LED

#### OPERATION

Manual with quick release knob

#### BASE PLATFORM

Metal / Granite

#### PLATFORM LOAD CAPACITY

15 Kgs

#### POWER SUPPLY

220-240 V ±5%, 50/60 HZ

#### OPTIONALS

- Motion control through joystick
- Touch probe
- Non-linear error correction
- DXF overlay

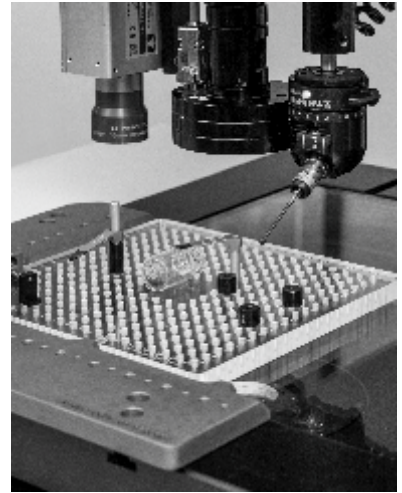
# Multi Sensor CNC VMM

An expert in three measurement technologies

SVI-CNC Series



SVI-3D-CNC



---

## SOFTWARE

MSU-3DPro / M3

## MEASURING RANGE

**Standard:** 250 X 150 X 200 mm

**Optional:** X-Axis upto 500 mm,  
Y-Axis upto 400 mm,  
Z-Axis upto 300 mm

## RESOLUTION

0.001 / 0.0005 / 0.0001 mm

## LINEAR ACCURACY

(3+L/200) micron

## REPEATABILITY

± (0.002 mm)

## VISION

1/3" High resolution CMOS camera

## MAGNIFICATION

**Optical:** 0.7X - 4.5X

**Monitor:** 35X - 225X

**Optional:** Motorised

## VIDEO EDGE DETECTION

Standard

## ILLUMINATION

**Surface:** LED

**Contour:** LED

## OPERATION

CNC

## BASE & PLATFORM

Granite base

## LOAD CAPACITY

30 Kgs

## JOYSTICK

Standard

## POWER SUPPLY

AC - 110/220V (50/60 Hz) single phase

## OPTIONALS

- Programmable light control
- Touch probe
- Non-linear error correction
- AutoFocus
- Laser
- White light sensor
- Rotary indexer

# Optical Co-Ordinate Measuring Machine

Measure big parts with highest precision

SVI-OCMM Series



SVI-OCMM-442



SVI-OCMM-662

---

## SOFTWARE

SIPMEAS / M3

## VISION

1/3" High resolution CMOS camera

## BASE PLATFORM

High precision granite DIN 876  
Grade 0

## MEASURING RANGE

450 X 450 X 200 mm  
600 X 600 X 200 mm  
1000 X 1200 X 200 mm

## MAGNIFICATION

**Optical:** 0.7X - 4.5X  
**Monitor:** 35X - 225X

## LOAD CAPACITY

20Kgs - 50 Kgs

## RESOLUTION

0.0005/ 0.0001 mm

## TRANSMISSION

Linear guide way + Rolling drive nut/  
Air bearing (All models except 442)

## JOYSTICK

Optional

## LINEAR ACCURACY

3+L/200  $\mu$ m, 5+L/200  $\mu$ m

## Z-AXIS BALANCE

Counter weight / Air cylinder

## POWER SUPPLY

AC - 110/220V (50/60 Hz) single phase

## REPEATABILITY

$\pm$  (0.003 mm)

## OPERATION

Manual / CNC

## OPTIONALS

PC + 24" TFT monitor

## MPEE U3

5+L/200  $\mu$ m / 6+L/200  $\mu$ m

## TOUCH PROBE

Renishaw MCP / MIH / MH20i

## PART HEIGHT

200 mm/250 mm

Note: Other size specifications can be provided on request. ( 1000X1000X200 and 1200x1500x200)

# Co-Ordinate Measuring Machine

Measure big parts with highest precision

## SVI-CMM Series



SVI-CMM-554  
With Vision



SVI-CMM-442  
With Vision & Base Light



SVI-CMM-775

### MEASURING RANGE

400 X 450 X 250 mm  
500 X 500 X 400 mm  
700 X 700 X 500 mm  
800 X 1000 X 600 mm

### LINEAR ACCURACY

1.5+L/200 µm

### MPEE U3

3+L/200µm/4+L/150µm

### RESOLUTION

0.001 / 0.0005/0.0001 mm

### SOFTWARE

SIPMEAS

### REPEATABILITY

By ring gauge (0.003 mm)

### TRANSMISSION

Linear guide way + Drive nut  
Air bearing in 3 axis

### BASE PLATFORM

High precision granite DIN 876  
Grade 0

### Z-AXIS BALANCE

Counter weight / Air cylinder

### PART HEIGHT

250 mm - 600 mm

### OPERATION

Manual / CNC

### LOAD CAPACITY

120Kgs - 1000Kgs

### TOUCH PROBE

Renishaw MCP / MH-20 / MH20i /  
PH10T / PH10M / PH10MQ / PH20

### MAGNIFICATION

**Optical:** 0.7X - 4.5X

**Monitor:** 35X - 225X

### VISION

High resolution camera (Opt.)

### JOYSTICK

Optional

### POWER SUPPLY

220-430 V, ±5%, 50/60 HZ

### OPTIONALS

PC + 22" LED Monitor

\* Accuracy is defined with master gauges at temperature 20° c ± 1°c and humidity 55% to 65%





**One Click  
Measurement  
Systems**

---

**World Fastest and  
most accurate**

# Vertical Part Genie

One click reliable measurements

SVI-PQ Series



Bench Top



Stainless Steel



Floor Model

## FIELD OF VIEW

Ø18 mm/ Ø28 mm/ Ø41 mm/  
Ø55 mm/68x35 mm/ 85x43 mm/  
96x50 mm/ 125x65 mm/  
150x80 mm/ 200x105 mm/  
250x135 mm

## CAMERA

20MP Industrial camera

## ACCURACY

$\pm 3 + L/20 \mu\text{m}$  /  $\pm 3 + L/30 \mu\text{m}$  /  
 $\pm 5 + L/50 \mu\text{m}$

## REPEATABILITY

$\pm 2 \mu\text{m}$  /  $\pm 3 \mu\text{m}$  /  $\pm 5 \mu\text{m}$

## LEAST COUNT

1  $\mu\text{m}$

## ILLUMINATION

Surface: LED    Contour: LED

## FOCUSING RANGE

Optional: 30 mm

## POWER SUPPLY

110/220V @ 50Hz  $\pm 5\%$

## OPTIONAL HARDWARE

PC/Laptop with WIN10 OS

## CONSTRUCTION

Sheet metal with fibre covers or  
Stainless steel

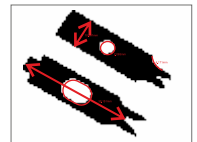
## TOUCH SCREEN MONITOR

Optional

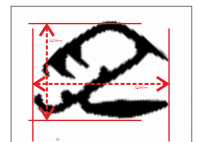
## TABLE

Optional with bench top vertical  
type and horizontal type systems.

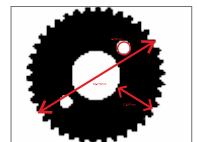
## SHEET METAL PRESS PARTS



## RUBBER PROFILES



## GEARS



# Horizontal Part Genie

One click reliable measurements

SVI-HPQ Series

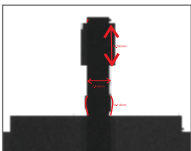


With Granite Base

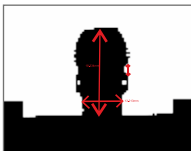


Flip Model

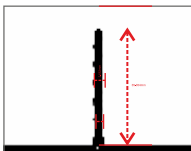
BRASS PARTS



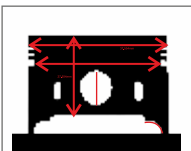
FASTENERS



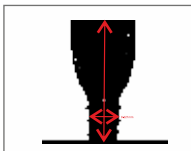
ORTHOPAEDIC SCREWS



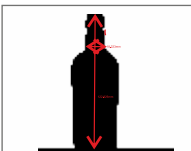
PISTON RINGS



PET PREFORMS



GLASS BOTTLES



# Dual Part Genie

One click reliable measurements

SVI-DPQ Series



With Pneumatic Control



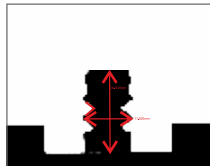
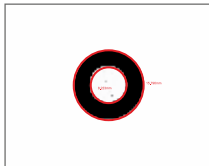
Sheet Metal Construction



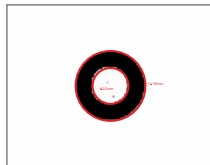
Stainless Steel Construction

---

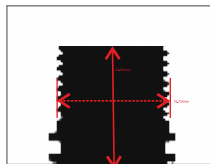
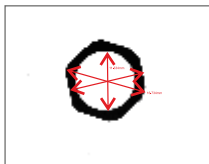
## RUBBER



## AERO SPACE



## BRASS PARTS



# Cable Genie

Tailored to your needs

SVI-CQ Series



BENCH TOP  
Diameter upto 48mm



FLOOR STANDING  
Diameter upto 150mm

## FIELD OF VIEW

Ø16 mm/ Ø24 mm/ Ø36 mm/  
Ø48 mm/ Ø64 mm/ Ø80 mm/  
Ø96 mm/ Ø120 mm/ Ø150 mm/  
Ø200 mm

## CAMERA

5MP/ 20MP Industrial camera

## ACCURACY

$(3+L/100)\mu\text{m}$

## REPEATABILITY

$\pm 2\mu\text{m}$

## LEAST COUNT

$1\mu\text{m}$

## ILLUMINATION

Surface: LED

Contour: LED

## FOCUSING RANGE

Optional: 30 mm

## POWER SUPPLY

110/220V @ 50Hz  $\pm 5\%$

## OPTIONAL HARDWARE

PC/Laptop with WIN10 OS

## CONSTRUCTION

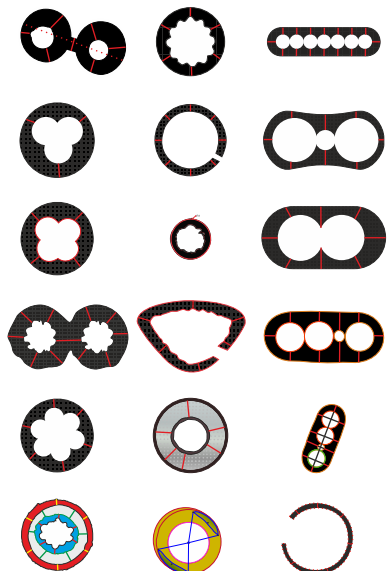
Sheet metal with fibre covers or  
stainless steel

## TOUCH SCREEN MONITOR

Optional

## TABLE

Optional with bench top vertical  
type and horizontal type systems.



# Rubber Seal Genie

## Simple and Reliable

### SVI-SG Series



SVI-SG-80

---

#### FIELD OF VIEW

64×48 mm / 80×60 mm

#### CAMERA

20MP Industrial camera

#### ACCURACY

±15 µm

#### REPEATABILITY

±10 µm

#### LEAST COUNT

0.1 µm

#### ILLUMINATION

**Surface:** Ring LED light

**Contour:** Telecentric LED light

#### AUTO ALIGNMENT

360° Compensation

#### FOCUSING RANGE

**Optional:** 30 mm

#### POWER SUPPLY

110/220V @ 50Hz ±5%

#### OPTIONAL HARDWARE

PC/Laptop with WIN10 OS

#### CONSTRUCTION

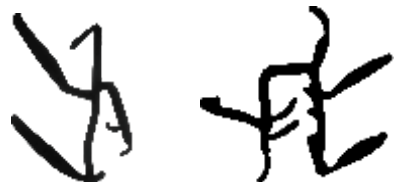
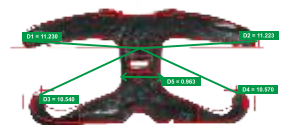
Sheet Metal with fibre covers or stainless steel

#### TOUCH SCREEN MONITOR

Optional

#### TABLE

Optional with bench top vertical type and horizontal type systems.



# Spring Genie

## The right equipment for Springs

### SVI-DPQ Series



SVI-DPQ-80

---

#### FIELD OF VIEW

16x13 mm/ 34x29 mm/ 61x51 mm  
80x60 mm/ 120x90 mm/  
144x110 mm

#### NO. OF CAMERAS

2

#### CAMERA

5MP/ 12MP Industrial camera

#### ACCURACY

$\pm 3 \mu\text{m}$  /  $\pm 5 \mu\text{m}$

#### REPEATABILITY

$\pm 2 \mu\text{m}$  /  $\pm 3 \mu\text{m}$

#### LEAST COUNT

0.1  $\mu\text{m}$

#### ILLUMINATION

Surface: LED    Contour: LED

#### FOCUSING RANGE

Optional: 30 mm

#### AUTO ALIGNMENT

360° Compensation

#### MAX. MEASUREMENT POINT

10,000

#### POWER SUPPLY

110/220V @ 50Hz  $\pm 5\%$

#### OPTIONAL HARDWARE

PC/Laptop with WIN10 OS

#### BASE PLATFORM & COLUMN

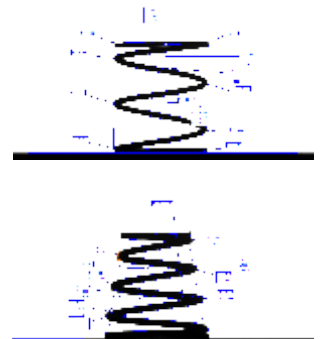
Metal

#### TOUCH SCREEN MONITOR

Optional

#### TABLE

Optional with bench top vertical  
type and horizontal type systems.



# CNC Part Genie Sony Robo

## Faster measurements of Large parts

SVI-PQ-CNC Series



---

### MEASURING RANGE

**Std:** (X Axis-300, Y Axis-200) mm  
**Focusing:** 30 mm (Z Axis ) manual

### FIELD OF VIEW

36 mm

### RESOLUTION

0.0001 mm

### LINEAR ACCURACY

(3+L/200) micron

### REPEATABILITY

± (0.002 mm)

### VISION

5MP/20MP High resolution camera

### VIDEO EDGE DETECTION

Standard

### ILLUMINATION

**Surface:** LED  
**Contour:** LED

### OPERATION

Fully programmable XY table

### LOAD CAPACITY

5 Kgs

### MOTION CONTROL

Standard through e-Stop

### POWER SUPPLY

220-240 V ±5%, 50/60 HZ

### SOFTWARE features

Batch measurement  
Auto alignment  
Sub pixel processing  
Auto report generation



# Vertical Part Genie

## with Fixed Table

VSPG/VTPG Series



VSPG-100/VTPG-150

---

### MEAS. RANGE (mm)

**Wide field:** 100x80 / 150110

**small field:** NA / 50x35

### ILLUMINATION

**Standard:** **Back light:** Collimated green,  
**Top light:** 4 quadrant white LED ring light  
& low angle green ring light-software  
controlled (Intensity and position)

**Optional:** Coaxial

### MEAS. TIME

<2sec

### MEAS. DATA

2D Measurement

### ACCURACY

**Wide field** (w/o movement):  $\pm 3/\pm 5$   $\mu\text{m}$

**small field** (w/o movement): NA /  $\pm 2$   $\mu\text{m}$

### GLASS SIZE

150 x 150/200 x 200

### POWER SUPPLY

220V~, 50Hz, 600W

### REPEATABILITY

**Wide field** (w/o movement):  $\pm 1/\pm 1$   $\mu\text{m}$

**small field** (w/o movement): NA /  $\pm 0.5$   $\mu\text{m}$

### TRAVEL

Z axis: 75 mm

### ENVIRONMENTAL REQUIREMENT

**Temperature:** 20°C +2°C

**Relative humidity:** 30%-80%

**Vibration:** <0.002g, less than 15 Hz

### LOAD CAPACITY

5 Kgs

### WEIGHT OF PLATFORM

Approx. 45Kg/ Approx. 60Kg

# Vertical Part Genie

## with Moving Table

SVI- VMPG Series



SVI-VMPG-2020/3020

---

### MEAS. RANGE (mm)

**Wide field:** 200x200 / 300x200

**Wide field:** 130x130 / 230x130

### ACCURACY

**Wide field** (w/o movement):  $\pm 3 \mu\text{m}$

**Wide field** (w/o movement):  $\pm 1 \mu\text{m}$

**Wide field** (movement):  $\pm (5+0.02L) \mu\text{m}$

**Wide field** (movement):  $\pm (3+0.02L) \mu\text{m}$

### REPEATABILITY

**Wide field** (w/o movement):  $\pm 1 \mu\text{m}$

**Wide field** (w/o movement):  $\pm 0.5 \mu\text{m}$

**Wide field** (movement):  $\pm 2 \mu\text{m}$

**Wide field** (movement):  $\pm 15 \mu\text{m}$

### LOAD CAPACITY

5 Kgs

### ILLUMINATION

**Standard:** **Back light:** Collimated green,  
**Top light:** 4 quadrant white LED ring light

& low angle green ring light-software controlled (Intensity and position)

**Optional:** Coaxial

### GLASSSIZE

250 x 230/315 x 265

### TRAVEL

X axis: 120/205

Y axis: 125 mm

Z axis 75 mm

### CAMERA

20 MP

### MEAS. TIME

< 2 Sec

### OPTIONAL

CAD overlap | Confocal sensor

### POWER SUPPLY

220V~,50Hz, 600W

### FOV – WIDE FIELD

100x80mm

### FOV – FIELD SMALL

20x6mm.

### AUTO FOCUS

Yes

# Vertical Part Genie

## Large Table

SVI- VMPG Series



SVI-VMPG-4050

---

### MEAS. RANGE (mm)

**Wide field:** 500x400  
**Small field:** 430x350

### ACCURACY

**Wide field** (w/o movement):  $\pm 3 \mu\text{m}$   
**Small field** (w/o movement):  $\pm 1 \mu\text{m}$   
**Wide field** (movement):  $\pm (5+0.02L) \mu\text{m}$   
**Small field** (movement):  $\pm (3+0.02L) \mu\text{m}$

### REPEATABILITY

**Wide field** (w/o movement):  $\pm 1 \mu\text{m}$   
**Small field** (w/o movement):  $\pm 0.5 \mu\text{m}$   
**Wide field** (movement):  $\pm 2 \mu\text{m}$   
**Small field** (movement):  $\pm 1.5 \mu\text{m}$

### LOAD CAPACITY

25 Kgs

### ILLUMINATION

**Standard:** **Back light:** Collimated green,  
**Top light:** 4 quadrant white LED ring light  
& low angle green ring light-software  
controlled (Intensity and position)  
**Optional:** Coaxial

### GLASS SIZE

520 x 420 mm

### TRAVEL

X axis: 410 mm  
Y axis: 340 mm  
Z axis 250 mm

### CAMERA

20 MP

### MEAS. TIME

< 2 Sec

### OPTIONAL

CAD overlap / Confocal sensor

### POWER SUPPLY

220V~, 50Hz, 600W

### FOV – WIDE FIELD

100x80 mm

### FOV – SMALL FIELD

20x16 mm

### AUTO FOCUS

Yes

# Horizontal Part Genie

## with Rotary

SVI- HRPG Series



SVI-HRPG 2515/1075

---

### MEAS. RANGE (mm)

100x75/ 26X15

### ILLUMINATION

**Top light:** 4 quadrant white LED  
ring light (optional)

**Back light:** collimated green

### OPTIONAL

CAD overlap

### ACCURACY

$\pm 3 / \pm 1 \mu\text{m}$

### TRAVEL

10 mm manual

### POWER SUPPLY

220V~, 50Hz, 600W

### REPEATABILITY

$\pm 1 / \pm 0.5 \mu\text{m}$

### CAMERA

20 MP

### ROTARY PLATFORM

Yes (Optional)

### LOAD CAPACITY

3 Kgs

### MEAS. TIME

< 2 Sec

### AUTO FOCUS

Yes (optional)

### TOP LIGHT

Yes

# Tool Inspector Machine

## Measure Tool Geometry with Precision

SVI-TI-3D



---

### MEAS. RANGE

**X-Axis:** 200 mm

**Y-Axis:** 200 mm

**Z-Axis:** 100 mm

### RESOLUTION

0.001 mm

### ACCURACY

$(3+L/200)\mu\text{m}$

### REPEATABILITY

2 microns

### MAGNIFICATION

14X-90X

### WORKING DISTANCE

170 mm

### MAX TOOL DIAMETER

**Std.:** 25 mm diameter with rotary fixture & 100 mm with V block.

**Opt.:** 50 mm with rotary fixture

### MAX TOOL LENGTH

200 mm

### FIELD OF VIEW

Max 18-Min 2.8 mm

### CAMERA

High Resolution 3/5MP

### ROTARY PLATE RANGE

360°

### ROTARY PLATE RES.

6"

### ACCURACY OF GRANITE

Din Grade 0

### ACCURACY OF THE V BLOCK

Grade 1

### MAX LOAD CAPACITY

20 Kgs

### ILLUMINATION

LED cold light

### ILLUMINATION - BACK

LED

# Accessories

## Concentricity Fixtures



Foot Switch



V Block



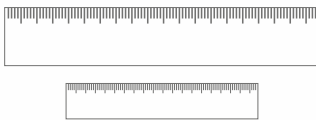
Center Holding Device



Rotary Table



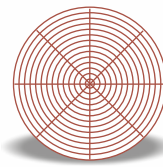
Vertical Holding Device



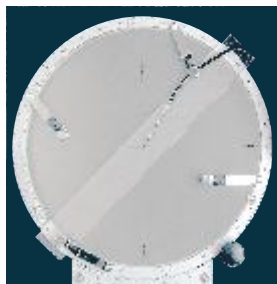
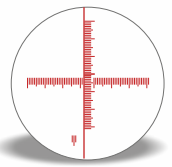
Calibration Scale



Calibration Gauge



Profile Charts For Comparison



Opto Edge Sensor



Motorized Controller With Joystick



Fibre Optic Light



## Microscopes

---

# Reliable & Contextual

# Tool Maker Microscope

## Simple and Reliable

STM



---

### OPTICAL HEAD

Monocular (Binocular for camera attachment)

### MEAS. RANGE

50 mm X 50 mm X 70 mm

### OBJECTIVE LENS

Std.: 2X  
Opt.: 3X, 4X, 5X

### EYEPIECE

Std.: WF 15X (with cross hair)  
Opt.: WF 10X, WF 20X

### MAGNIFICATION

Std.: 30X  
Opt.: Upto 100X

### REPEATABILITY

$\pm 2 \mu\text{m}$

### WORKSTAGE SIZE

160 mm X 160 mm for micrometers  
and 260 mm X 260 mm for D.R.O.  
and software

### MEASURING RANGE

50 mm X 50 mm for micrometers  
and 100 mm X 100 mm for D.R.O.  
and software

### MEAS. METHOD

Micrometer / D.R.O. / Software

### Resolution

$5 \mu\text{m}$  /  $1 \mu\text{m}$  /  $0.5 \mu\text{m}$

### EYEPIECE PROTECTOR

0-360° with adjustable vernier of  
least count 6 mins.

### FOCUSING RANGE

100 mm

### ILLUMINATION

Contour: Built-in base halogen lamp  
Surface: 2 halogen lamps

### ACCURACY

$3 + 1/200 \mu\text{m}$



# Special Purpose Microscope

## High Precision Measuring Microscope

SVI-TRZ 3D Series



SVI-TRZ-3D

### SOFTWARE

MSU-3DPro/ M3

### MEAS. RANGE

**Standard:** 150 X 100 X 100 mm  
**Optional:** X-Axis upto 500 mm,  
Y-Axis upto 400 mm,  
Z-Axis upto 300 mm

### OBSERVATION HEAD

Binocular/Trinocular

### RESOLUTION

0.001 / 0.0005 / 0.0001 mm

### ACCURACY

( $3+L/200$ ) micron

### REPEATABILITY

+/- (0.002 mm)

### VISION

1/3" High resolution CMOS camera

### MAGNIFICATION

**Optical:** 0.7X, 1X, 2X, 3X, 4X, 4.5X

### MAG. ON EYEPIECE

**Std.:** 7X, 10X, 20X, 30X, 40X, 45X  
**Optional:** 50X, 100X, 200X, 400X,  
500X, 1000X, 1200X, 1500X

### EYEPIECE

WF-10X with Cross hair/  
Opt. 20X/25X

### ILLUMINATION

**Surface:** LED  
**Contour:** LED

### OPERATION

Manual with quick release knob / CNC

### BASE PLATFORM

Metal base / Granite base

### CAPACITY

15 / 25 Kgs

### POWER SUPPLY

AC - 110/220V (50/60 Hz) single phase

### OPTIONALS

- Touch probe
- Laser
- Metallurgy measurements

# Depth Measuring Microscope

The most accurate Depth Measuring

SVI-TR Series



SVI-TR-3D

---

## SOFTWARE

MSU-3DPro/ M3

## MEAS. RANGE

**Standard:** 150 X 100 X 100 mm  
**Optional:** X-Axis upto 500 mm,  
Y-Axis upto 400 mm,  
Z-Axis upto 300 mm

## OBSERVATION HEAD

Binocular/Trinocular

## RESOLUTION

0.001 / 0.0005 / 0.0001 mm

## ACCURACY

(3+L/200) micron

## REPEATABILITY

± (0.002 mm)

## VISION

1/3" High resolution CMOS camera

## OBJECTIVE

**Standard:** 1X, 3X and 5X  
**Optional:** 10X / 40X / 45X / 60X

## EYEPIECE

WF-10X with Cross Hair

## MAG. ON EYEPIECE

**Std.:** 10X, 20X, 30X, 50X  
**Optional:** 100X, 200X, 400X, 500X,  
1000X, 1500X

## ILLUMINATION

**Surface:** Fibre optic / LED  
**Contour:** LED

## OPERATION

Manual with quick release knob / CNC

## BASE PLATFORM

Metal base

## CAPACITY

15 / 25 Kgs

## POWER SUPPLY

AC - 110/220V (50/60 Hz) single phase

## OPTIONALS

- Touch Probe
- Metallurgy measurements

# Digital Microscope

Performance in compact size

MAXY 2M

OBJECTIVE LENS  
4X-LONG FOCUS

Magnification :  
20x-55x on 21.5' monitor

Working Distance :  
22.6 - 9.5 mm



MAXY-40



MAXY-140

---

## MAGNIFICATION

13x-140x on 24" Monitor

3x - 43x on 24' monitor

## WORKING DISTANCE

22 mm-214 mm

20mm - 300 mm ( \* )

## FIELD OF VIEW

3.6 - 40 mm

11-142 mm ( \* )

## CMOS SENSOR

4K Ultra HD Resolution

2M pixels

## INTERFACE OF OUTPUT

1080P Full HD & USB 2.0 & Micro SD Card Slot

Full HD 1080P

## FOCUS SYSTEM

IR Remote Control, Auto/Manual Focus

IR Remote Control, Auto/Manual Focus

## MICRO SD CARD

Capture JPG (Support up to 128 GB)

Capture JPG (Support up to 128 GB)

## LIGHT

Built-in 30 PCS of Wide Angle LED,  
Allow to Adjust the Brightness

Gooseneck light, adjustable

## OPTIONAL 10X LENS

Magnification up to 497X

C-Mount Lens

## DEVICE DIMENSION

Ø106 x 152(H) mm

68(L) x 66(W) x 169(H) mm

# Stereo Zoom Microscope

## Simple and Reliable

SVI-VIS



---

### OBSERVATION HEAD

Trinocular

### OPERATION

Manual

### EYEPIECE

10X

### EYEPIECE TYPE

Compensating

### OBJECTIVE LENS

0.6X-5.5X/ 0.7X-4.5X/ 0.8X-5X

### ILLUMINATION

**Surface:** LED/CFL 32 Watt

**Contour:** LED

### WORKING DISTANCE

91/ 100/ 108 mm

### CONSTRUCTION

Metal base

### ZOOM RATIO

9:1, 6.5:1, 7:1

### VISION

5MP/ 8MP CMOS Camera

### APPLICATIONS

Semiconductor

Electronics

Biomedical

Automotive

Testing & Identification

Food and Beverage

Fibre optic component

Telecommunications

Pharmaceutical

Medical Device

Nanotechnology

Photonics and

Biophotonics

SMD,PCB Assembly

# Carbon Black Dispersion Void Contamination Microscope

Tailored to your needs



---

## OBJECTIVES

4X, 10X, 20X, 40/50X, 100X

## EYEPICES

Paired 10X/20X

## ILLUMINATION

Incident, Transmitted, Polarising

## MAGNIFICATION

100 X, 450 X. (Any one select)

## MICROSCOPE SCREEN

6 Inch Diameter

## CAMERA

5MP

## HOT PLATE SIZE

8 inch diameter.

## TEMPERATURE RANGE

Upto 200°C

## TEMP. CONTROLLER

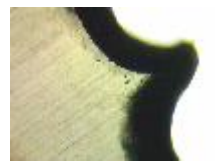
Thermostate

## POWER

230V, 50 Hz, Single phase.

## SOFTWARE

Void Contamination & Carbon Dispersion



# 10X Loupe High Quality Triplet Lens

The indispensable magnifier

SVI-10 XL



---

## MAGNIFICATION

10X

## LENS DIAMETER

23.6 mm

## EYE-DISTANCE

16 mm

## OBJECT DISTANCE

20.2 mm

## ADJUSTMENT RANGE

8.5 mm

## LIGHTING

Sun light & LED ring lamp

## DIVIDING PLATE

Cross reticule  
Metric keycode  
Multi ruler  
Multi scale ruler

## POWER SUPPLY

4 pcs batteries Lr936

## OTHERS

Metal frame

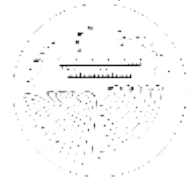
## PACKAGE

63.6(L)×62.4(W)×54(H) mm

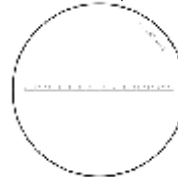
SIPCON 13/02  
SIPCON 14/02



SIPCON 13/03  
SIPCON 14/03



SIPCON 13/04  
SIPCON 14/04



SIPCON 13/05  
SIPCON 14/05



# Table Top Magnifier

## TTM Series



TTM(I)



TTM (II)



TTM(III)

### SPECIFICATIONS

MAGNIFICATIONILLUMINATION

3.5x

3.5x

7x

OUTER RING DIA.

22 Watt Circular Fluorescent Tube Diameter 216 mm

LENS DIAMETER

220 mm

220 mm

220 mm

EFFECTIVE LENS DIA

148mm

148 mm

148 mm

MAXIMUM HEIGHT

135 mm

135 mm

135 mm

VERTICAL MOVEMENT

380 mm

580 mm

390 mm

HORIZONTAL MOVEMENT

210 mm

N.A.

210 mm

LENS TILT

250 mm

890 mm

250 mm

STAND TYPE

90°

90°

90°

Table Top

C Clamp

Table Top

# Portable Table Top LED Magnifier

TTM Series



TTM 8.6



TTM 10.21

---

## SPECIFICATIONS

	TTM 8.6	TTM 10.21
MAGNIFICATION	8x	10x
ILLUMINATION	6 LED	21 LED
LENS DIAMETER	138 mm	130 mm
STAND TYPE	Table Top	Table Top
POWER	100~240V	100~240V

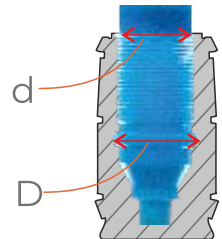


# DITTO MIX

## Make complex 3D measurements 2D

### 1. Select your application ?

- External Dimension
- Internal Dimension
- Roughness
- Visual Surface (Horizontal, Vertical, Slanrise)
- Protecting, Masking, Sealing
- Reinforcement, Holding



### 2. Minimum pullout diameter - d ?

### 3. Do you want total or partial impression ?

### 4. d/D ratio ( D=maximum Internal Dimension) ?

### 5. What measuring instrument do you have ?

Contact, Non-contact Or Both



## SPECIFICATIONS

	DT912	DT914	DT916
COLOR	Green/Blue	Orange	Red
SUITABLE D/D RATIO	<40%	<15%	0%
FINAL SHORE HARDNESS (DUROMETER)	20	40	60
REPLICA ACCURACY	1µm	1µm	1µm
CURING TIME	25min	45min	50min
DIMENSIONAL STABILITY	0.04%	0.05%	0.07%
INTERNAL THREADS (FINE)	Yes	No	No
SMALL UNDERCUTS	Yes	No	No
INTERNAL THREADS (BIG)	Yes	Yes	No
BLADE SECTIONING	No	Yes	Yes
CONTACT MEASUREMENT	No	No	Yes

# Applications



---

## DIMENSIONS

- Internal Thread
- Grooves
- Radius
- Taper Angles
- Internal Chamfers
- Thread Roots
- Small Bores
- Tslots
- Notches
- Undercuts

## CUSTOM FIXTURING

- Soft parts
- Unbalanced parts
- Non-Magnetic parts

## MASKING & SEALING

- Sandblasting
- Painting
- Chemical Treatment
- Heat treatment
- Anodising
- Chrome Plating

## SURFACE MEASUREMENT

- Roughness
- Surface Finish Inspection

# Cable Slicing Machine (Bench Top)

For the perfect slice

SCS



Product Video



SCS-15



SCS-30

CABLES	PVC, household, and control cables	PVC, household, and control cables
MIN CABLE DIAMETER	0.5 mm	1.00 mm
MAX CABLE DIAMETER	15 mm	30 mm
SLICE THICKNESS (RANGE)	0.3 mm – 3.00 mm	0.3 mm – 3.00 mm
OPERATION	Motorised	Motorised
SPARE BLADES	05	05
ACCESSORIES	5 spare blades and 10 dies	5 spare blades and 15 dies
DIMENSIONS	200 X 200 X 300 mm	300 X 300 X 360 mm
POWER	100 W	100 W
WEIGHT	10 kgs	15 kgs

# Slicer, Stripper & Slitter

(Semi Automatic)

Three machines in one

SCS-SA



Product Video

## Cables

XLPE/HT/HDPE

## OPERATION

Semi automatic

## CUTTING SPEED

3 pieces/min

## MIN CABLE DIAMETER

10 mm

## MAXIMUM SAMPLE LENGTH (HOLD)

200 mm

## BLADE CONSTRUCTION

High-speed steel

## MAX CABLE DIAMETER

125 mm

## BLADE LIFE (YEARS)

2-5 years

## POWER

0.55 kW

## MAX STRIP LENGTH

200 mm

## BLADE LENGTH

100 mm (stripping and slitting)  
150 mm (slicing)

## WEIGHT

220 kg

## SLICE THICKNESS RANGE

0.5-3.00 mm

## ACCESSORIES

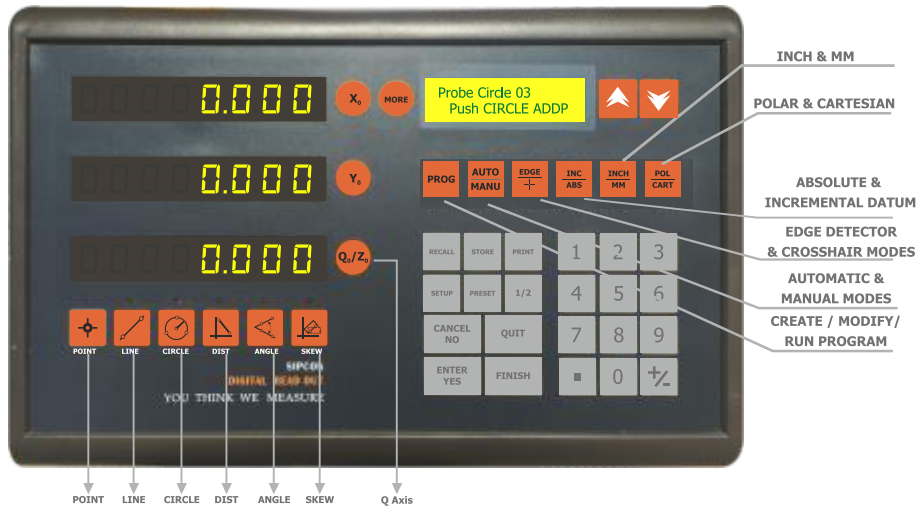
Wrench, blade (1 set)

## DIMENSIONS

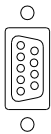
1800(L)×510(W)×1350(H)

# Digital Readout

Prepared for all challenges



## DATA MANAGEMENT & OUTPUT



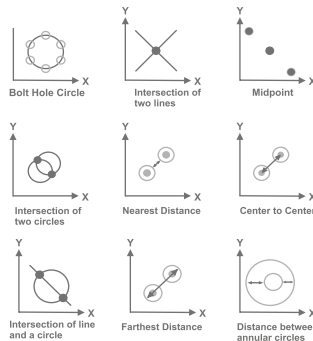
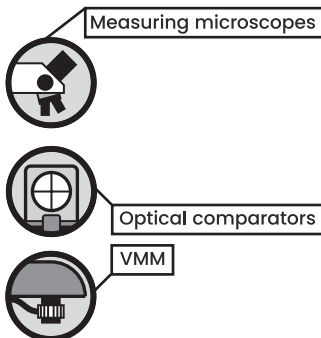
Parallel and serial ports makes it easy to transfer data to PCs, networks and printers.

## CONSTRUCTION

Select two or more features to create intersections or constructions. Reduces operator effort by eliminating confusing construction menus.

## SCREW

$X_0$					7.968	Screw pitch
$Y_0$					15.116	Major/minor diameter
$Z_0$					9.53	Rising angle



# MLX DRO

## A simple & innovative Readout solution



### CLEAN, INTUITIVE DESIGN

Combining a familiar user experience with current touchscreen conventions, the Mx200 readout can quickly be integrated into your process while being accessible to a wide range of users.

### REPORT PRINT EXPORT

Choose from one of three report formats; CSV, Standard, or Tolerance. Report contents can include a report title, time and date stamps, and all feature measurement result data.

Export choices include:  
Paper Printer(USB, Wifi,Bluetooth ),  
Save to file(USB), RS232 Output

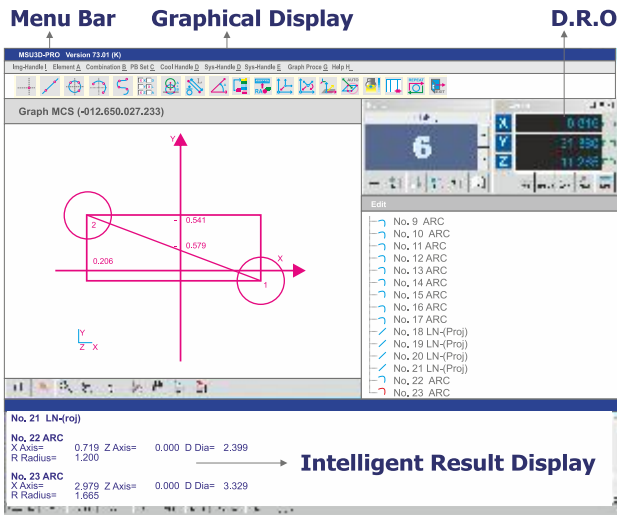
A close-up of the MLX DRO readout device screen showing a table of measurement data. The table has columns for Name, Code, Number, Actual, Set, Tact, Deviation, and Tolerance. The data is as follows:

Name	Code	Number	Actual	Set	Tact	Deviation	Tolerance
Circle 1	0	22.284	19.243				
Circle 2	0	82.19.44	78.19.02				
Circle 3	1	1.122	1.122				
Circle 4	1	2.024	2.024				
Circle 4	0	79.940	79.940	-0.002	0.003	0.004	
Circle 4	1	26.900	26.900	0.000	0.003	0.003	
Circle 5	0	4.678	4.682	-0.002	0.003	0.003	
Circle 5	0	80.490	80.482	-0.002	0.010	0.003	
Circle 5	0	67.870	67.860	-0.010	0.010	0.003	
Circle 5	0	5.876	5.866	-0.010	0.010	0.003	
Circle 5	0	60.170	60.170				



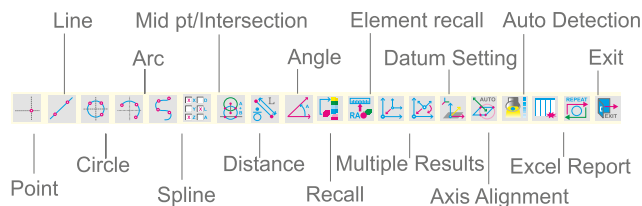
# SIPMEAS 2D Measuring Software

Simple & Reliable



## MENU BAR

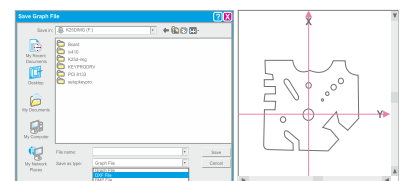
One touch menu bar for all basic geometric measurements.



- **Inch/metric Conversion**
- **Up To 500 Points Allowed On Each Feature**
- **Auto Recognition** : Just Input The Points It Will Tell you What Feature Is This.
- **Both Cylindrical & Cartesian Coordinate System.**
- **Angle Display In Degree-min-sec Or Decimal Degree.**

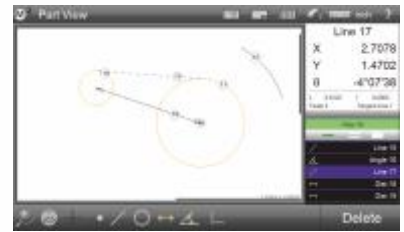
## DATA MANAGEMENT EXPORT AND CALCULATIONS

Directly saving graphs as DXF or IGS files makes it possible to export our measurement to CAD. To measure the distance between the 2 circles in the graph just click the distance button and then click the two circles from the graph. The result is on the screen.



# M2 Measuring Software

For today's metrology needs



---

## FEATURES

2D- Point, Lines, Circles, Arcs  
Slots, Rectangles, Blobs  
Distances, Angles

## REPORTING FORMATS

CSV, European, Tolerance,  
European 2, User Defined Fully  
customized

## CALIBRATIONS

LEC, SLEC, NLEC

## APPLICATIONS

Reverse engineering  
In line production  
Quality Inspection

## CONSTRUCTIONS

2D- Point, Lines, Circles, Arcs  
Midpoints, Mid Lines, PCD,  
Distances, Intersection, Bisectors,  
Offset, Angles

## TOLERANCES

Size, Form, Orientation,  
Position, Runout

## PROGRAMMING

Measure & program

## MEASUREMENT MODES

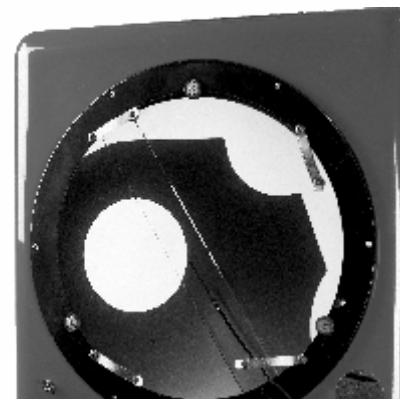
Polar/Cartesian  
DMS/ DD  
MM/ INCH

## DATUMMING FEATURES

Skew alignment  
Datum (origin) points  
Reference axis rotation & skew

## EXPORTS

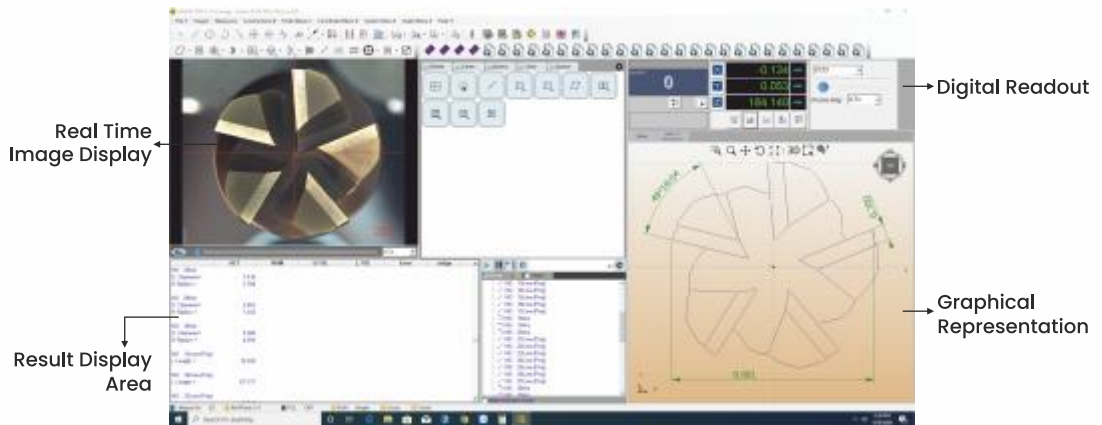
PDF, DXF, Excel, CSV, TSV(Tab)  
Data transmit to RS 232 port





# SIPMEAS 3D Measuring Software

The most powerful package



## TOLERANCE SETTING & RESULT DISPLAY

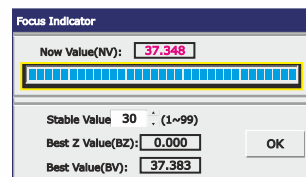
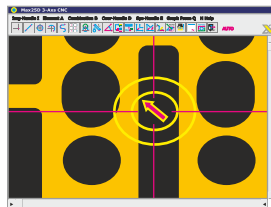
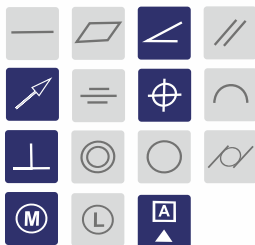
Supports more than 10 types of Tolerance setting, Result window will display all the results with tolerance values and will give an indication for PASS or Fail features.

## PROGRAMMING & NAVIGATION

Teach programs with one click and repeat those with the help of navigation Tool bar shown in the above picture. This navigation Toolbar guides you what features are to be measured and where is there exact location.

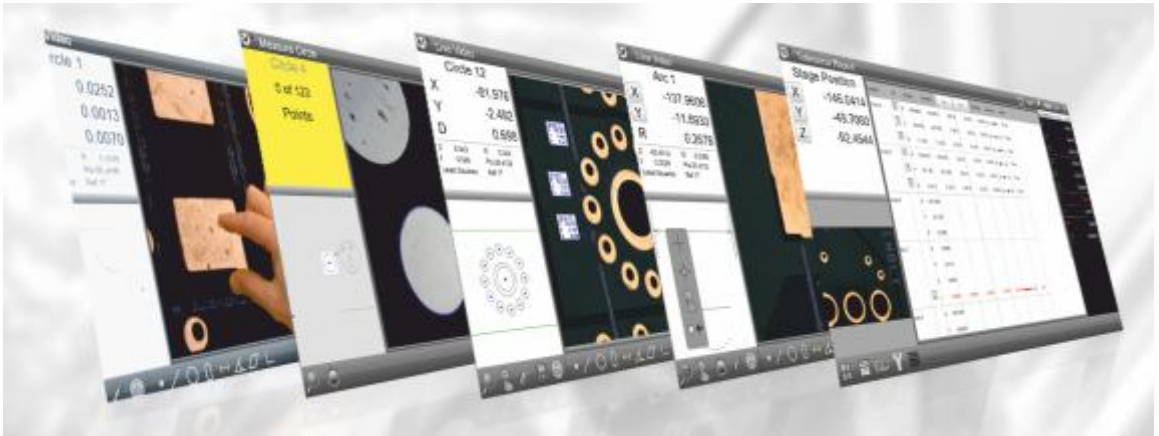
## FOCUS INDICATOR FOR 3-D MEASUREMENT

This will indicate the best focus value and the corresponding Z value to make sure focus is clear before measurement. A must to do for 3-D Measurement.



# M3 Measuring Software

For today's metrology needs



---

## FEATURE MEASUREMENT

2D- Point, Lines, Circles, Arcs  
Slots, Rectangles, Blobs, Distances,  
Angles, Planes, Patterns & Profiles  
3D- Planes, Cylinders, Spheres,  
Cones

## REPORTING FORMATS

CSV, European, User Defined Fully  
customized Single Part or Multiple  
Part reports Statistical Reports

## CALIBRATIONS

LEC, SLEC, NLEC, Orthogonality  
Pixel Size, Camera skew, FOV  
Shape cal, Cross, Bright frame

## APPLICATIONS

Reverse engineering  
In line production  
Quality Inspection

## CONSTRUCTIONS

2D- Point, Lines, Circles, Arcs  
Midpoints, Mid Lines, PCD,  
Intersections, Bisectors, Offset  
Distances, Angles, 3D- Planes,  
Cylinders, Spheres, Cones

## TOLERANCES

Size, Form, Orientation, Position,  
Runout Profile - Full GD&T Control  
Direct import nominals from DXF  
file

## PROGRAMMING

Measure & program, DXF auto  
programming, Part pallet (Grid &  
Polar), PDF Programming

## MEAS. MODES

Polar/Cartesian  
DMS/ DD  
MM/ INCH

## DATUMMING FEATURES

Primary planes  
Skew alignment  
Datum (origin) points  
Reference axis rotation & skew  
Multiple reference frames & feature lock

## EXPORTS

PDF, DXF, IGES, STL, Excel, CSV, TSV(Tab)  
TXT, Cloud .CSV, Cloud .DXF  
Image ( BMP, JPEG, PNG or TIFF)  
Data transmit to RS 232 port

## CNC FEATURES

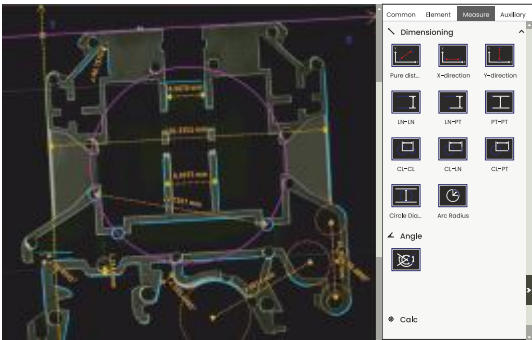
Collision avoidance, Software fencing  
Machine Zero / Auto Home  
Probe Path data customization

## FOCUS OPTIONS

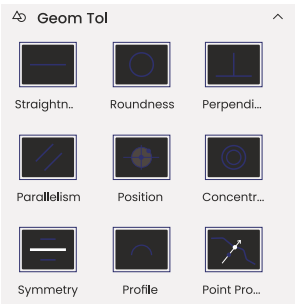
Auto Focus - CNC  
Focus Assist - Manual

# SIPMEAS 2.0

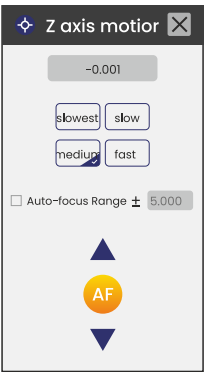
Software as simple as it can be



Geometrical Tolerances



Autofocus



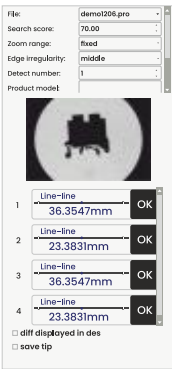
This will indicate the best focus value and the corresponding Z value to make sure focus is clear before measurement. A must to do for 3-D Measurement.

Constructions

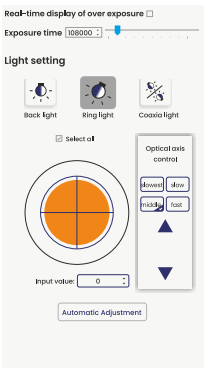


Select two or more features to create intersections or constructions. This reduces operator effort by eliminating confusing construction menus.

Result Display



Multiple Illumination options with automatic adjustment

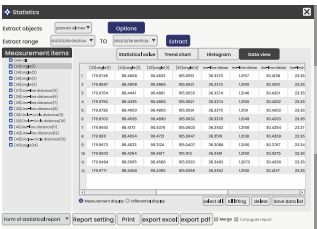


4 channel light controller with programming capability for each channel i.e. intensity value for each channel source would be memorized in the program and would be repeated at the time of running.

Statistical Measurement Tools



Statistical Reports



Customised report generation with color coded pass and fail, options to add the company logo , batch number, operator name, date and time etc. Image of measurement done is also the part of the report format.

# Make your team **AUDIT READY** Enroll for SIPCON's **CSTP**

**(Cable Standard Training Program)**

## **India**

IS 10810, EN 60811, IEC 60811-1-1, IS-7098  
IEC 60227, IS 694

## **British Country**

IS 10810, EN 60811, BS5308-2:1986

## **Italy**

IEC 60228, VDE 0295

## **Tanzania**

IEC 60227, IEC 60811-1-1

## **South Africa**

SANS-10198-8:2016

## **Serbia**

EN 60811-508-2012, EN 50396:2005

## **Dubai**

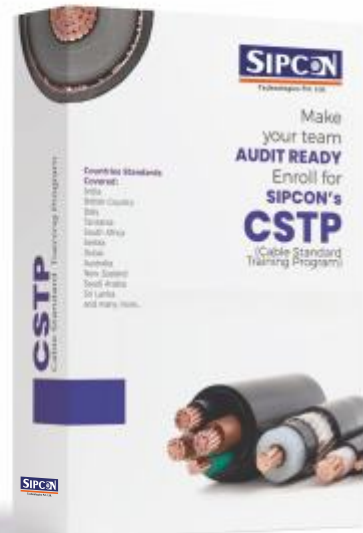
IEC 60227-2, IEC 60811-2-1

## **Australia**

AS/NZS 1660.2.1

## **New Zealand**

AS/NZS 1660.2.1



# **CSTP**

2 Day Comprehensive  
Training Program

# Make your team **MEASUREMENT READY** Enroll for SIPCON's **SAME**

**SIPCON** Academy for Metrology Engineers

Training For measurement on  
Metrology Equipment:

Gage R&R

MSA

Surface Roughness Measurement

Calibration Process

GD&T COURSES

17025

Metallurgy

SPC



# SAME

2 Day Comprehensive  
Training Program

# Calibration Kit

For ultralong life of your instruments

## Includes:

- SFS Lubricator
- Art Coat
- Cleaning Agent
- WD40
- Soft Cloth Wipes



# Book your Product DEMO

Book a LIVE DEMO to get all your queries answered



<https://sipconinstrument.com/book-a-demo.php>



zoom



Book a 30mins online demo

Visit Our Website



Watch Product Videos





# Installation, Training & Online Support

Installation and Training is for all customers and usually takes place within 3 to 4 days of the delivery of the system at customer premises. Calibration is done free of cost after installation. Subsequent calibrations are required after every one year and are chargeable at per calibration.

We offer two type of support:

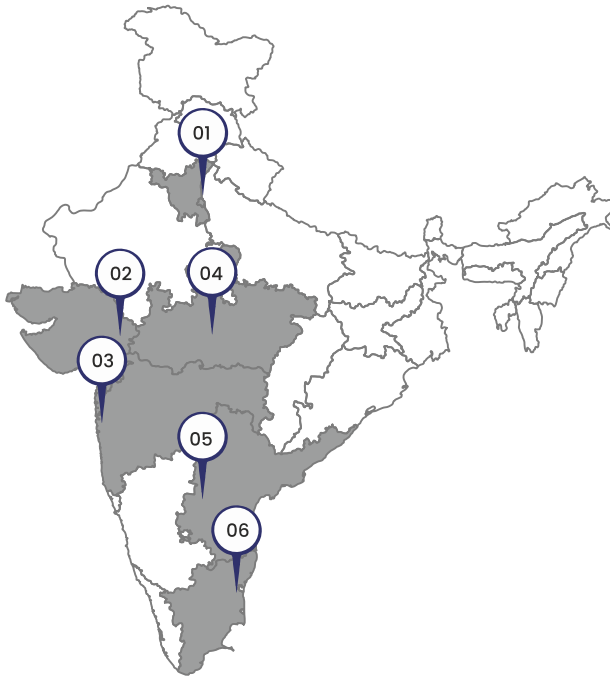
## ONLINE & OFFLINE

Online support is free of cost throughout the life of the system and resolves 90% of the issues arising in system.



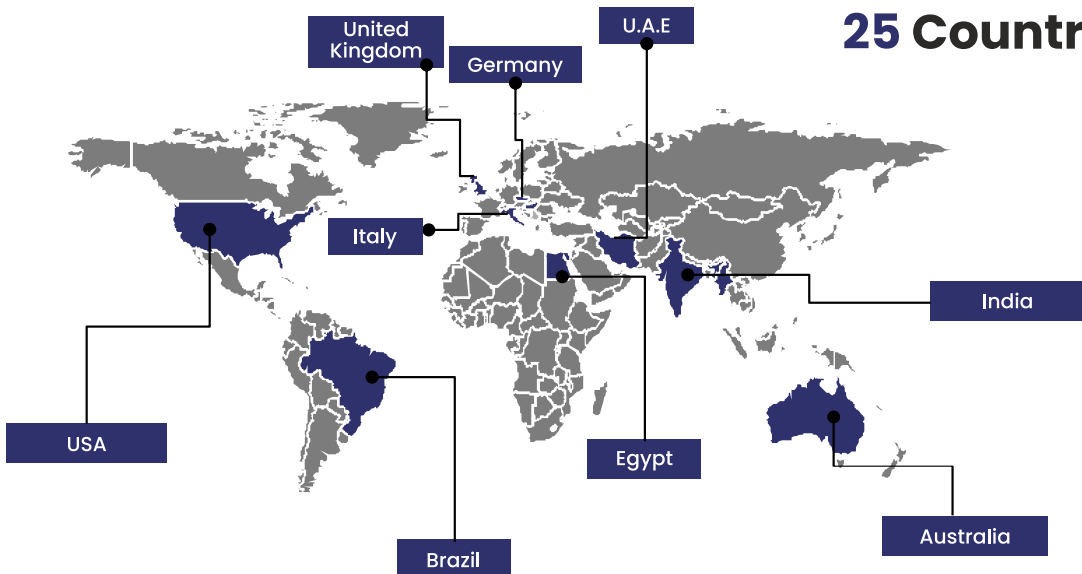


# Indian Roots & Global Reach



01	<b>Delhi</b> B-474, Nehru Ground, N.I.T Faridabad, Haryana -121001 Contact Person: <b>Ashish Rajput - 92156 99673</b>
02	<b>Rajkot</b> 304 Diwali Chambers, Dhebar Road, Rajkot, Gujarat-360002 Contact Person: <b>Arun Kumar - 89500 99611</b>
03	<b>Mumbai</b> Office No.2, M.D. Tones Paradise, Opp. New Pedestrian Bridge, Navagaon, Dahisar (W), Mumbai - 400068 Contact Person: <b>Nihal- 92156 99676</b>
04	<b>Indore</b> 105, Rashmi Apartment, Y.N. Road, Indore - 452003 Madhya Pradesh Contact Person: <b>Shekhar Kumar - 89500 99677</b>
05	<b>Bangalore</b> #328, Third Main Road Domlur Layout Bangalore Contact Person: <b>Vikas Kansal- 70824 20431</b>
06	<b>Chennai</b> F.No.110, Mugalivakkam Main Road, Madhanandhapuram, Chennai-600 Contact Person: <b>Sahil- 70567 99662</b>

## Exported To 25 Countries



# Notes

A series of horizontal dashed lines for writing notes.


# Notes


A series of horizontal dashed lines for writing notes.

**Sipcon  
Technologies Pvt Ltd**

Plant 1: 116-B HSIIDC, Industrial Estate,  
Ambala Cantt-133006 Haryana-India

Plant 2: Plot No. 280, HSIIDC Industrial Estate,  
Saha-Ambala-133104 Haryana-India

 +91-82229 29966, +91 171 2699668, 2983231

 +91-171-2699667

[www.sipconinstrument.com](http://www.sipconinstrument.com)  
[info@sipconinstrument.com](mailto:info@sipconinstrument.com)

